

Intrepid Control Systems, Inc.

Use of Multiple Hardware in Vehicle Spy

Document Number: AN-ICSI-1004

Rev 1.0 06/2014

Contents

1. Introduction:	3
2. Use of Multiple Hardware in Vehicle Spy	3
2.1 VehicleSpy3 Settings for multiple hardwares:.....	3
2.2 VehicleSpy3 settings to add a Network	4
3. Contact Us:	6

1. Introduction:

Vehicle Spy can be configured to connect to multiple hardware. The networks of the additionally connected hardware can be customized and configured as extra networks in Vehicle Spy.

This application note explains how to customize & configure the LIN1 network of the additional hardware as a LIN5 network in Vehicle Spy.

2. Use of Multiple Hardware in Vehicle Spy

2.1 VehicleSpy3 Settings for multiple hardwares

1. Connect multiple hardwares to the machine.
2. Launch VehicleSpy3.
3. Select the options Tools → Options → Hardware setup
4. Select Multiple Devices
5. Select Multiple Hardware Setup
6. Set Hardware selection as → Select hardware using ascending serial numbers
7. Give hardware name as Intrepid 1(Default 1st Hardware name is Intrepid 0) → Add → Ok

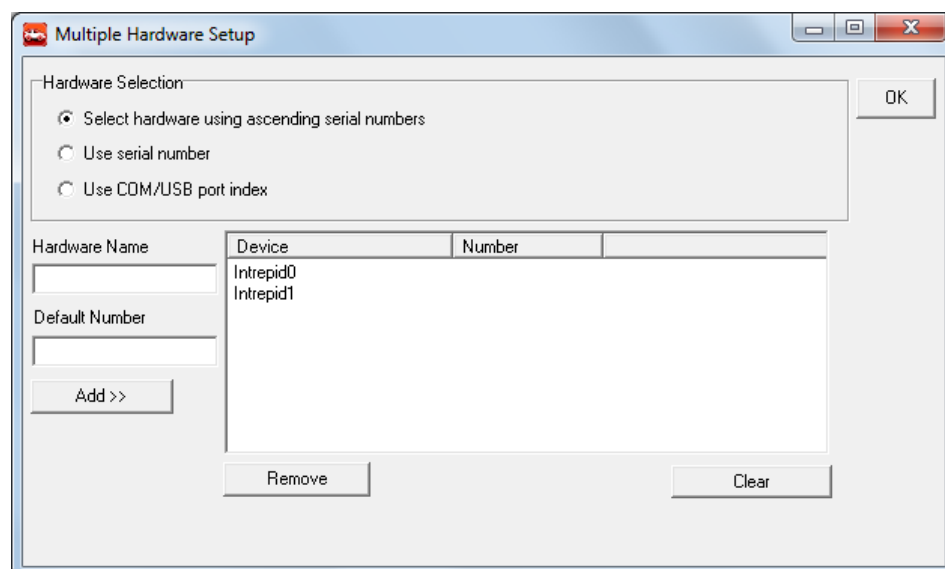


Figure 1: Multiple hardwares detected

2.2 VehicleSpy3 settings to add a Network

1. Select Spy networks → Networks

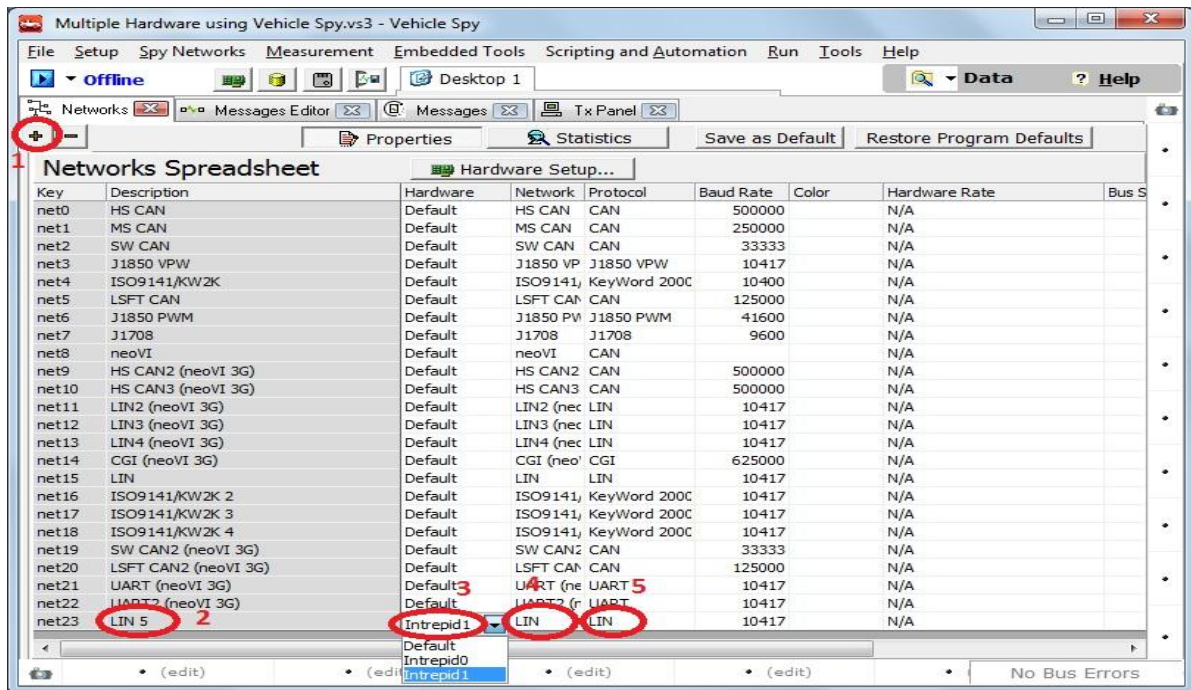


Figure 2: Add a Network

2. Add Network (Fig.2 →1)
3. Give the name to the Network (Fig.2 →2)
4. Select the hardware (Intrepid1) (Fig.2 →3)
5. Select the Network to be used (LIN/CAN/K-line)(Fig.2 →4)
6. Select Protocol to be used (LIN/CAN/K-line)(Fig.2 →5)
7. Select proper baud rate
8. Go to Spy Networks → Message Editor
9. Select Network LIN 5
10. Add Messages to Transmit or Receive

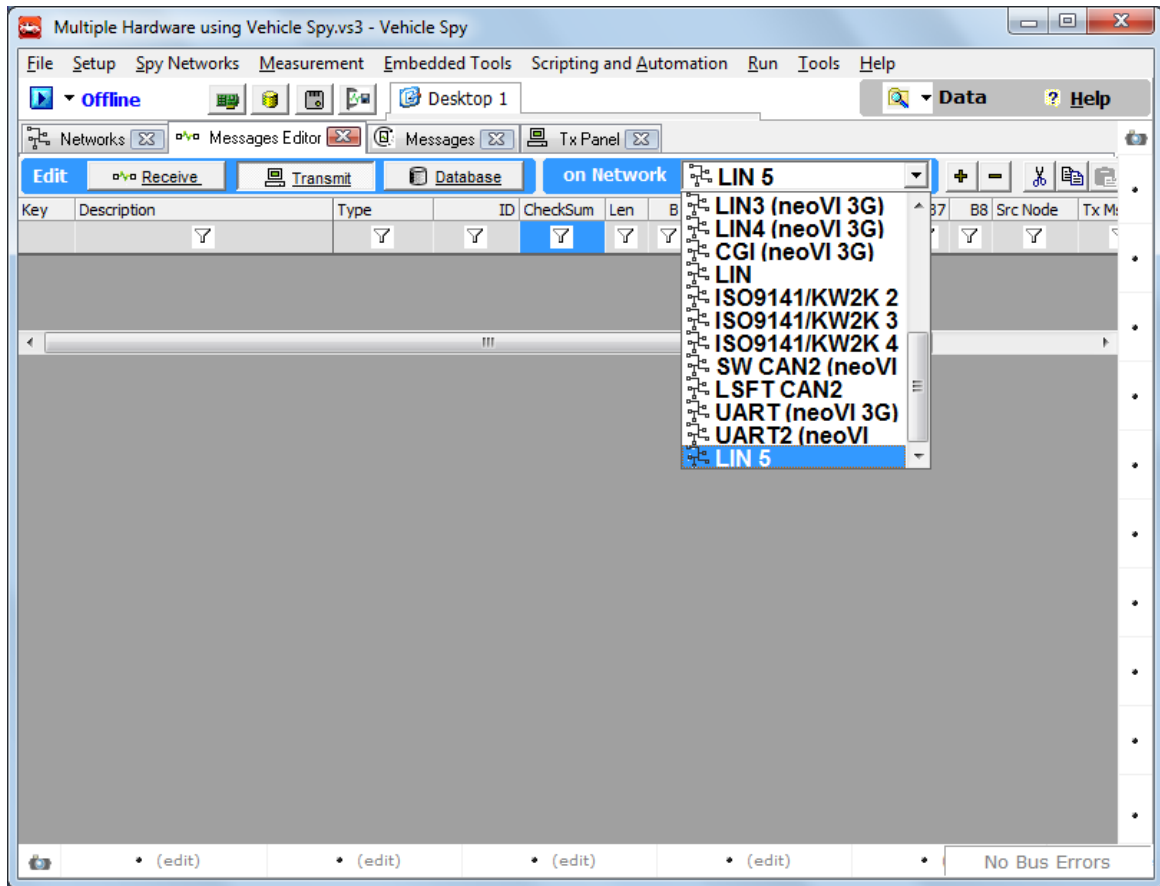
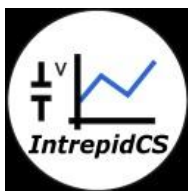


Figure 3: Select network and add messages / Database

11. This will enable the LIN 1 of the second hardware according to the ascending Serial Numbers of connected hardware.
12. This LIN network will be configured as LIN 5 Network in Vehicle Spy Message editor.
13. Similarly, other networks like CAN/K-line of Second Hardware can be configured in Vehicle Spy according to the need

3. Contact Us:



Intrepid Control Systems, Inc.

Email: icsindia@intrepidcs.com

Website: www.intrepidcs.com