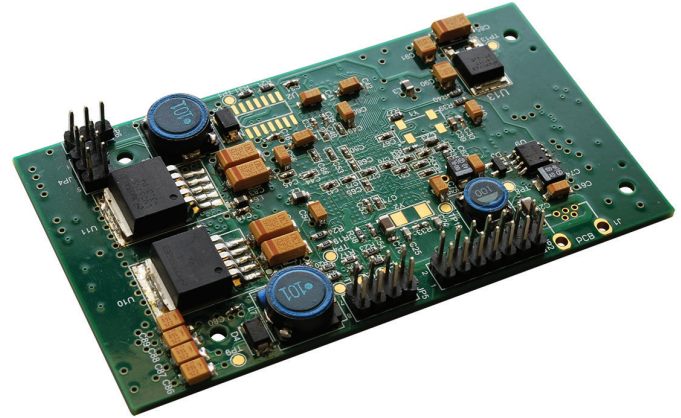


MOST VNET Module

Add MOST Network Functionality to neoVI PLASMA or neoVI ION

The MOST VNET Module is designed to add MOST network functionality to a neoVI PLASMA or neoVI ION. The MOST VNET can occupy up to two VNET slots within a neoVI PLASMA or VNET one slot in a neoVI ION.



Maximum Performance for MOST25 and MOST50

The MOST VNET Module supports a MOST25 dongle or a MOST50 dongle. The MOST25 dongle has LEDs to indicate light, lock, and message traffic.

Install Up to THREE VNETs into ONE PLASMA (or TWO VNETs into ONE ION)

If you need more channels, or different channels, just install another VNET. You can mix and match up to three VNETs in a single neoVI PLASMA or up to two VNETs in a single neoVI ION. (Both devices must contain at least one FIRE VNET. The FIRE VNET is compatible with all other VNETs.) Example neoVI PLASMA configurations include:

- 1 x MOST Network and 6 x DWCAN (1 MOST VNET + 1 FIRE VNET)
- 1 x MOST Network , 6 x DWCAN and 1 x FlexRay Network (1 MOST VNET + 1 FIRE VNET + 1 FlexRay VNET)
- 1 x MOST Network , 6 x DWCAN and 7 x Differential Inputs (1 MOST VNET + 1 FIRE VNET + 1 AIN VNET)

VNETs Operate Independently or Together

Although they are independent, they record data with a single time stamp onto the neoVI PLASMA/ION's SD cards.

VNETs Operate via USB or Wireless Interface

All VNETs are accessible via USB, similar to our popular neoVI network adaptors. They also are accessible and programmable via the neoVI PLASMA/ION's wireless interfaces. This makes the neoVI PLASMA/ION ideal whether you're data logging in a remote area, on the test track, or running a test stand with multiple ECUs.

API Support

The neoVI DLL API includes examples for all popular development environments including C#, VB, NET, VB6, Delphi, C++ Builder, Visual C++, LabVIEW and LabWindows. Also, we have examples and drivers for Linux.

Rev.09032015



Intrepid Control Systems, Inc.

31601 Research Park Drive, Madison Heights, MI 48071 USA

(ph) +1-586-731-7950 (fax) +1-586-731-2274

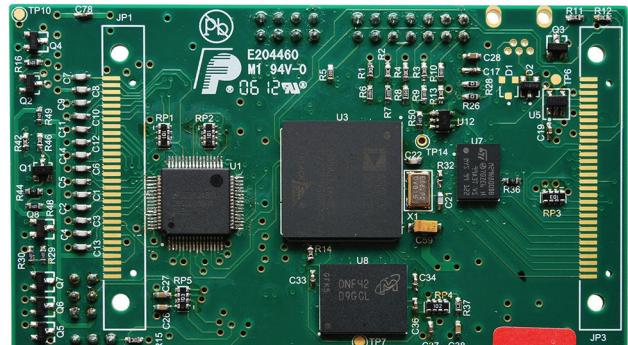
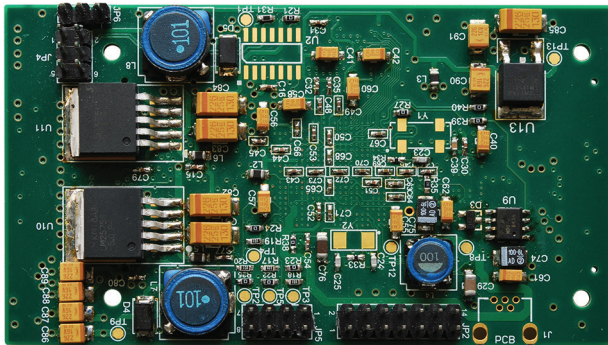
www.intrepidcs.com

automotive engineering
tool alliance 
www.aeta-rice.com

MOST VNET Module

Key Specifications:

- Supports MOST25 via dongle or MOST50
- Software selectable for 44.1 KHz or 48 KHz
- SPYNIC for control message monitoring and packet data
- INIC for diagnostic requests, SPC, MPR, NPR monitoring
- MOST High decoding
- Low level message monitoring (allocs, deallocs)
- Light, Lock and Message Traffic LEDs to determine source of ring disruption
- ADC/DAC for audio input and output
- Miss no messages on ring start
- Instant Wakeup on MOST Event or ECL
- Logs CMS, ASYNC frames, System Messages (MOST25), MOST High, MAMAC, changes to SBC, MPR, signal, and lock.
- Low Sleep Current: < 1mA



Ordering Information:

Part Number	Description
MOST-VNET	MOST VNET Module for neoVI PLASMA/ION (includes one dongle)
MOST25-DONGLE	Dongle for MOST25 Networks
MOST50-DONGLE	Dongle for MOST50 Networks

*Specifications subject to change. Please contact Intrepid for the latest information.

Rev.09032015



Intrepid Control Systems, Inc.
 31601 Research Park Drive, Madison Heights, MI 48071 USA
 (ph) +1-586-731-7950 (fax) +1-586-731-2274
www.intrepidcs.com

automotive engineering
 tool alliance
www.aeta-rice.com