

ValueCAN.rf

High Value, Low Cost Remote Data Logging System

Applications:

- Stand-alone data logger
- Remote data logger with auto-upload via WIFI, 3G/4G (optional), or Ethernet
- Stand-alone ECU or vehicle simulator
- In-vehicle data acquisition system
- Captive test fleet data collection
- Fleet management

Networks/Inputs:

- 4 Dual Wire CAN
- 2 LIN / KLINE / ISO9141
- 10/100 Ethernet
- 4 Configurable MISC Inputs 0-36V, PWM I/O, Digital I/O, including 1 Analog Input



Convenient,
Pocket Size Logger

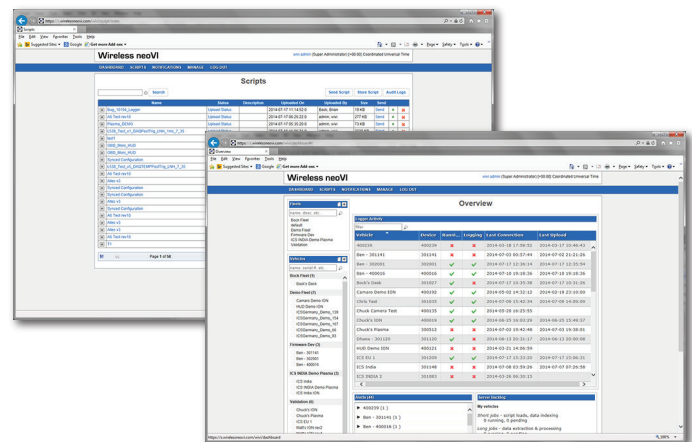


VehicleScope DAQ

Using VehicleScope DAQ inside the Vehicle Spy software provides a single GUI for loading vehicle databases such as A2L, ODX, MDX, GDX, DBC, AUTOSAR XML, and others. Once the vehicle databases are loaded, simply search by signal names, PIDs/DIDs/LIDs, measurements and parameters and select those you wish to acquire. Click on the Stand-Alone Logger tab to configure such things as pre/post trigger events, sleep modes, file names for your data files, remote upload options and much more.

Send Scripts and Manage Data Remotely via Wireless neoVI

You can remotely send a data logger configuration or script from Vehicle Spy to your ValueCAN.rf through Wireless neoVI. Wireless neoVI is a website that provides fleet and data management to a fleet of vehicles. You can get the latest GPS location, automatic data downloads, and automatic export of data in the format you require.



Wireless neoVI

Remote Connectivity and Optional GPS Location

The ValueCAN.rf provides several ways of connecting remotely:

- Internal 3G/4G Data Modem (optional)
- WIFI/Hotspot
- Ethernet (for connection to external 3G/4G modem or wired network)

All of these allow for data download and remote fleet management. In addition, the ValueCAN.rf has an optional 5 HZ GPS accurate to within 3 meters. GPS is provided both as a fleet management tool and within the data logging session for correlating location to your test data.

Rev.08042016



Intrepid Control Systems, Inc.

31601 Research Park Drive, Madison Heights, MI 48071 USA

(ph) +1-586-731-7950 (fax) +1-586-731-2274

www.intrepidcs.com

automotive engineering
tool alliance



www.aeta-rice.com

ValueCAN.rf

The Power of Scripting – Function Blocks

If you need to support a proprietary protocol, setup a simulation to run in parallel with the data logger, or any other custom action, the system offers a scripting environment for you to expand the base functionality to fit your unique needs. This makes the entire system very flexible and adaptable.

Logging While Downloading from Massive On-Board Memory

Data is uploaded without interrupting or slowing down your data acquisition. The ValueCAN.rf has a microSD Card slot which enables you to capture on the order of hundreds of billions of messages! If you are automatically uploading data, this may not seem important. However, if you are in an area with no coverage or you have a network outage, you won't have to worry about losing data.

Sleep Mode Option

The ValueCAN.rf also provides sleep management. Several options are available:

- Upload all data since last power-on before sleep
- Upload all pending data before sleep
- Upload pending data when network signal returns
- Sleep Mode current draw to 30 mA

Networks / Inputs:

- 4 Dual Wire CAN (All baud rates supported)
- 2 LIN / K Line / ISO9141
- MISC DIO 1-4 supports PWM IN and OUT.
- MISC IO 1 supports 0-36V A2D, 10-bit res, up to 1kHz

Device Specifications:

- Voltage Input: 4V - 40V
- Temperature: -40 to +85 Deg C
- Dimensions: 3.56cm x 8.73cm x 10.6cm (1.4in x 3.43in x 4in)
- LEDs: 4 red status LEDs
- SD Card: 1 16GB microSD
- 2.0 High-speed USB
- 10/100 Base T Ethernet
- 3G/4G Modem: Optional
- GPS Support: 5Hz GPS support (optional)

**Specifications subject to change. Please contact Intrepid for the latest information.*

DB9 PINOUT

Pin	Description
1	MISC DIO 1
2	MISC DIO 2
3	MISC DIO 3
4	MISC DIO 4
5	GND
6	NC
7	NC
8	NC
9	NC

HD DB15 PINOUT

Pin	Description
1	CAN1 H
2	CAN1 L
3	CAN2 H
4	CAN2 L
5	CAN3 H
6	CAN3 L
7	CAN4 H
8	CAN4 L
9	LIN 1
10	GND
11	NC
12	NC
13	LIN 2
14	NC
15	V+

Part Number	Description
ValueCAN-RF	ValueCAN.rf device

Rev.08042016



Intrepid Control Systems, Inc.

31601 Research Park Drive, Madison Heights, MI 48071 USA

(ph) +1-586-731-7950 (fax) +1-586-731-2274

www.intrepidcs.com

automotive engineering
tool alliance

www.aeta-rice.com