

# neoECU 10

## Low-Cost Embedded ECU

Need a scriptable, low-cost node for CAN, LIN and K-Line? The neoECU 10 provides 2x CAN channels, LIN, analog in and PWM out. It runs the Vehicle Spy CoreMini engine for easy setup.

### Applications:

- Gateway nodes
- Simulators
- Automated testers
- ECU replacement

### Features:

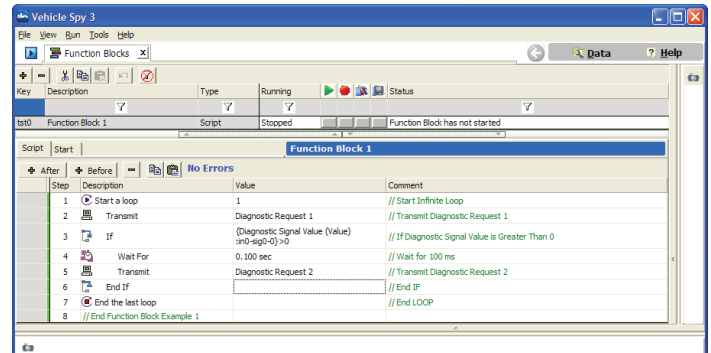
- 40 MIPS DSP
- 6.0-26.5V operation (expandable in specific configurations)
- 4x 0-26V analog inputs (800k input impedance)
- 6x PWM outputs (0-VBATT 50 mA low-side drivers)
- 4 internal buttons
- 5 LEDs
- CAN channels configurable for SW CAN, LSFT CAN, and DW CAN
- One LIN/K-Line channels; one L-Line possible with external driver
- Power management: 5 mA sleep mode (200  $\mu$ A hibernate mode in specific configurations)

The neoECU 10 requires one Vehicle Spy full license and a neoVI or ValueCAN to program it via CAN. Contact ICS for more details and for specific configurations.

### Ordering Information

| Part Number    | Description  |
|----------------|--|
| NEOECU-10-HHL  | neoECU 10 device with 2 DW CAN channels                  |
| NEOECU-10-HLSL | neoECU 10 device with 1 DW CAN and 1 LSFT/SW CAN channel |

Specifications subject to change; please contact Intrepid for the latest information. All trademarks are the property of their respective owners.



Vehicle Spy's graphical scripting environment makes rapid prototyping your ECU as simple as point and click.

### 25-Pin Connector Pinout

| Pin | Description   | Pin | Description |
|-----|---------------|-----|-------------|
| 1   | SW CAN        | 14  | HS CAN 1 H  |
| 2   | J1850 VPW     | 15  | HS CAN 1 L  |
| 3   | LSFT CAN H    | 16  | HS CAN 2 H  |
| 4   | LSFT CAN L    | 17  | HS CAN 2 L  |
| 5   | MSCAN H       | 18  | MISC DIO 4  |
| 6   | MSCAN L       | 19  | HS CAN 3 H  |
| 7   | ISO L         | 20  | HS CAN 3 L  |
| 8   | ISO K / LIN 1 | 21  | TSYNC CLK H |
| 9   | DBG CLK       | 22  | TSYNC CLK L |
| 10  | MISC DIO 1    | 23  | MISC DIO 3  |
| 11  | MISC DIO 2    | 24  | DBG RESET   |
| 12  | DBG DATA      | 25  | VBATT       |
| 13  | GND           |     |             |

Rev. 20200616



**INTREPID**  
CONTROL SYSTEMS  
www.intrepidcs.com

1850 Research Drive  
Troy, MI 48083 USA  
Phone: +1 (586) 731-7950  
Fax: +1 (586) 731-2274



www.aeta-rice.com